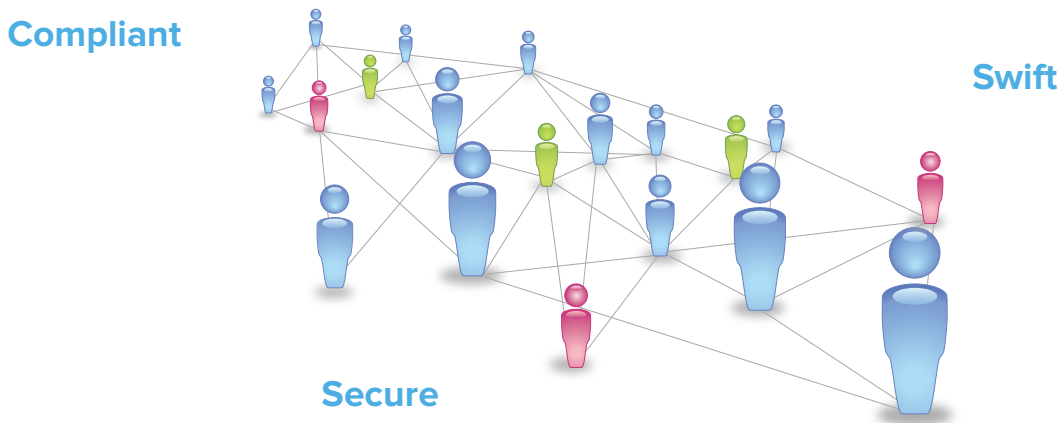


OneKey Web Authentication

Empower healthcare professionals to easily navigate to brand therapeutic websites with secure access.

Implement **OneKey Web Authentication** to maintain compliance and secure access for Healthcare Professional restricted website information.



COMPLIANT

- Authentication of the Healthcare Professional status supported by OneKey solutions
- Implemented authentication process compliant to local regulations
- Manages data privacy

SECURE

- Provides a unique ID code
- Systematically checks the security level of the Healthcare Professional's account
- Verifies information delivered by the OneKey call center resources mix

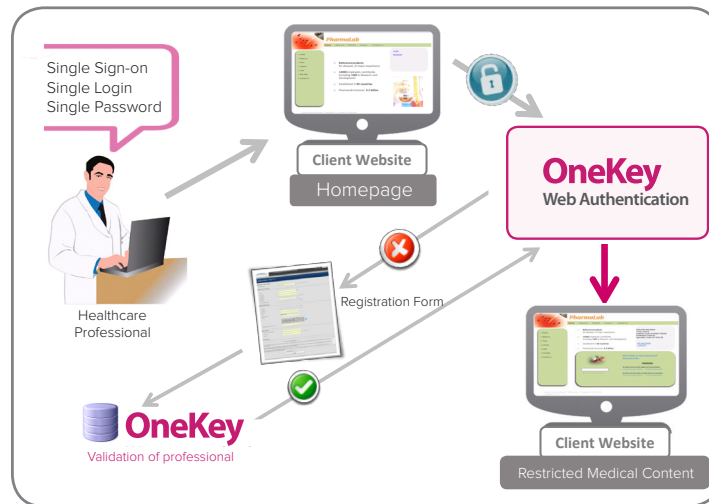
SWIFT

- Single login and password to multiple websites using one account
- Leverage easy and rapid access to a wide range of international medical websites
- Increase your customer knowledge

HOMEPAGE

Create One Account, Register with One Login and Password

The screenshot shows two panels. The left panel, titled "Create a OWA account.", features a blue background with a photo of three healthcare professionals. It includes the text "A unique authenticated access to all the professional sites!", "Subscribing this service allows you to log only once for each secured parts of our partner sites", a "Create account" button with a pencil icon, and "registration free" text. A "Who are we?" link is at the bottom. The right panel, titled "Enter your OWA Account", has a white background and contains fields for "Login" and "Password", a "Remember my login on this computer" checkbox, a "LOGIN" button, and a "Forgot password link?" link.



Key Features

- **Guaranteed secure authentication process**
 - Single registration process to authenticate Healthcare Professionals
 - On-going checking and monitoring with the appropriate security level
- **Connection to every OWA Website with a single sign-on per session**
- **Registration process fully automated and easy to embed on websites**
- **Statistic reports about Healthcare Professionals who visit specific websites frequently**
- **Integration of visited website information into a CRM system**
- **A service based on OneKey, the worldwide Healthcare Professionals Customer Master Reference, available in 70+ countries**